

Detail Ref.	Detail Title
HH-TJ-SW-01	Solid External Masonry Wall, Externally Insulated - Suspended Beam And Block Floor, Insulation Above Slab
HH-TJ-SW-02	Solid External Masonry Wall, Externally Insulated - Suspended In-Situ Concrete Floor, Insulation Below Slab
HH-TJ-SW-03	Solid External Masonry Wall, Externally Insulated - Concrete Ground Bearing Floor, Insulation Below Slab
HH-TJ-SW-04	Solid External Masonry Wall, Externally Insulated - Solid Wall Lintel
HH-TJ-SW-05	Solid External Masonry Wall, Externally Insulated - Sill
HH-TJ-SW-06	Solid External Masonry Wall, Externally Insulated - Jamb
HH-TJ-SW-07	Solid External Masonry Wall, Externally Insulated - Intermediate Timber Floor Within A Dwelling
HH-TJ-SW-08	Solid External Masonry Wall, Externally Insulated - Precast Concrete Separating Floor Between Dwellings
HH-TJ-SW-09	Solid External Masonry Wall, Externally Insulated - Pitched Roof, Gable, Insulation At Ceiling Level, Ventilated Loft
HH-TJ-SW-10	Solid External Masonry Wall, Externally Insulated - Pitched Roof, Gable, Insulation At Rafter Level, Unventilated Rafter Void
HH-TJ-SW-11	Solid External Masonry Wall, Externally Insulated - Pitched Roof, Eaves, Insulation At Ceiling Level, Ventilated Loft
HH-TJ-SW-12	Solid External Masonry Wall, Externally Insulated - Pitched Roof, Eaves, Insulation At Rafter Level, Unventilated Rafter Void
HH-TJ-SW-13	Solid External Masonry Wall, Externally Insulated - Normal Corner
HH-TJ-SW-14	Solid External Masonry Wall, Externally Insulated - Inverted Corner
HH-TJ-SW-15	Solid External Masonry Wall, Externally Insulated - Party Wall Between Dwellings

REV.	DATE.	DESCRIPTION.	BY.
D	08/2023	REFERENCE TO CONSTRUCTIVE AND REGISTERED CONSTRUCTION DETAILS REMOVED. REFERENCE TO H+H CALCULATED Ψ -VALUES ADDED. BLOCK FORMATS NOTE REVISED	SJB
C	12.2019	BLOCK FORMAT NOTES REVISED.	SJB
B	11.2015	LABC NOTE ADDED.	SJB
A	09.2014	BLOCK FORMATS NOTE REVISED	SJB

These details have been produced for guidance only. It is the responsibility of the building designer to ensure that the details shown are compatible with the overall building design and will satisfy the relevant parts of the Building Regulations applicable before they are adopted into the project design.



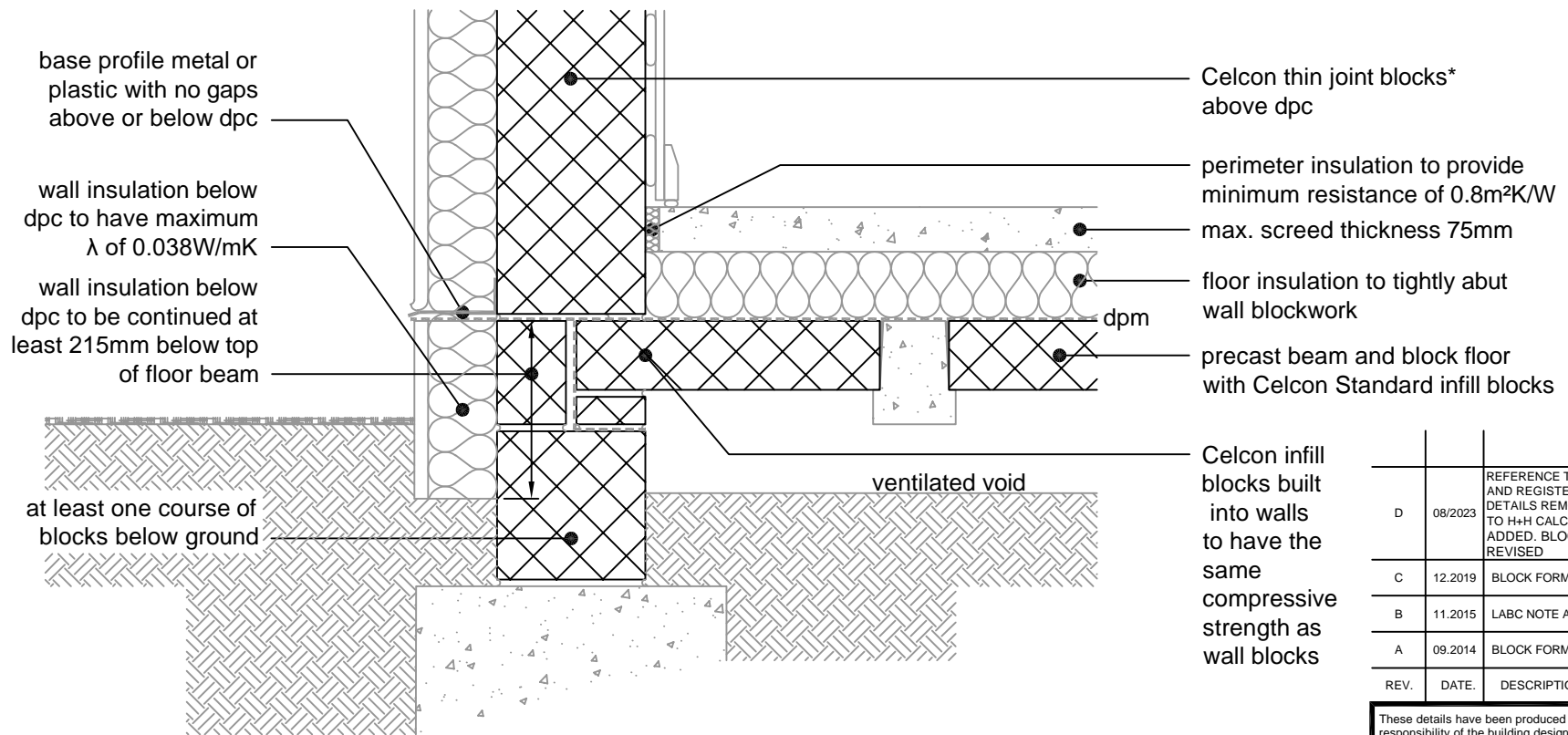
H+H UK Limited
 Technical Services Dept.
 Celcon House
 Ightham, Sevenoaks
 Kent, TN15 9HZ
 Tel +44 (0)1732 880580
 Fax +44 (0)1732 887013
 Email tsd@hhcelcon.co.uk

TITLE **Thin Joint Junction Details
 (solid wall with external insulation)**

DWG No. **INDEX**

DRAWN BY **SJB** CHECKED BY **AHR**

DATE **Nov 2013** SCALE **N.T.S.** REV.NO. **D**



* Thin joint block formats are:
 Plus = 630mm x 215mm
 in 2mm Celfix mortar joints

This junction detail has been assessed by H+H UK Ltd. for thermal performance based on various Celcon blocks and insulation combinations. Applicable Ψ -values and minimum temperature factors compatible with the latest Building Regulations can be found in our 'H+H Calculated Ψ -values' document, available to download from our website www.hhcelcon.co.uk.

REV.	DATE.	DESCRIPTION.	BY.
D	08/2023	REFERENCE TO CONSTRUCTIVE AND REGISTERED CONSTRUCTION DETAILS REMOVED. REFERENCE TO H+H CALCULATED Ψ -VALUES ADDED. BLOCK FORMATS NOTE REVISED	SJB
C	12.2019	BLOCK FORMAT NOTES REVISED.	SJB
B	11.2015	LABC NOTE ADDED.	SJB
A	09.2014	BLOCK FORMATS NOTE REVISED	SJB

These details have been produced for guidance only. It is the responsibility of the building designer to ensure that the details shown are compatible with the overall building design and will satisfy the relevant parts of the Building Regulations applicable before they are adopted into the project design.

H+H
 PARTNERS IN WALL BUILDING

H+H UK Limited
 Technical Services Dept.
 Celcon House
 Ightham, Sevenoaks
 Kent, TN15 9HZ
 Tel +44 (0)1732 880580
 Fax +44 (0)1732 887013
 Email tsd@hhcelcon.co.uk

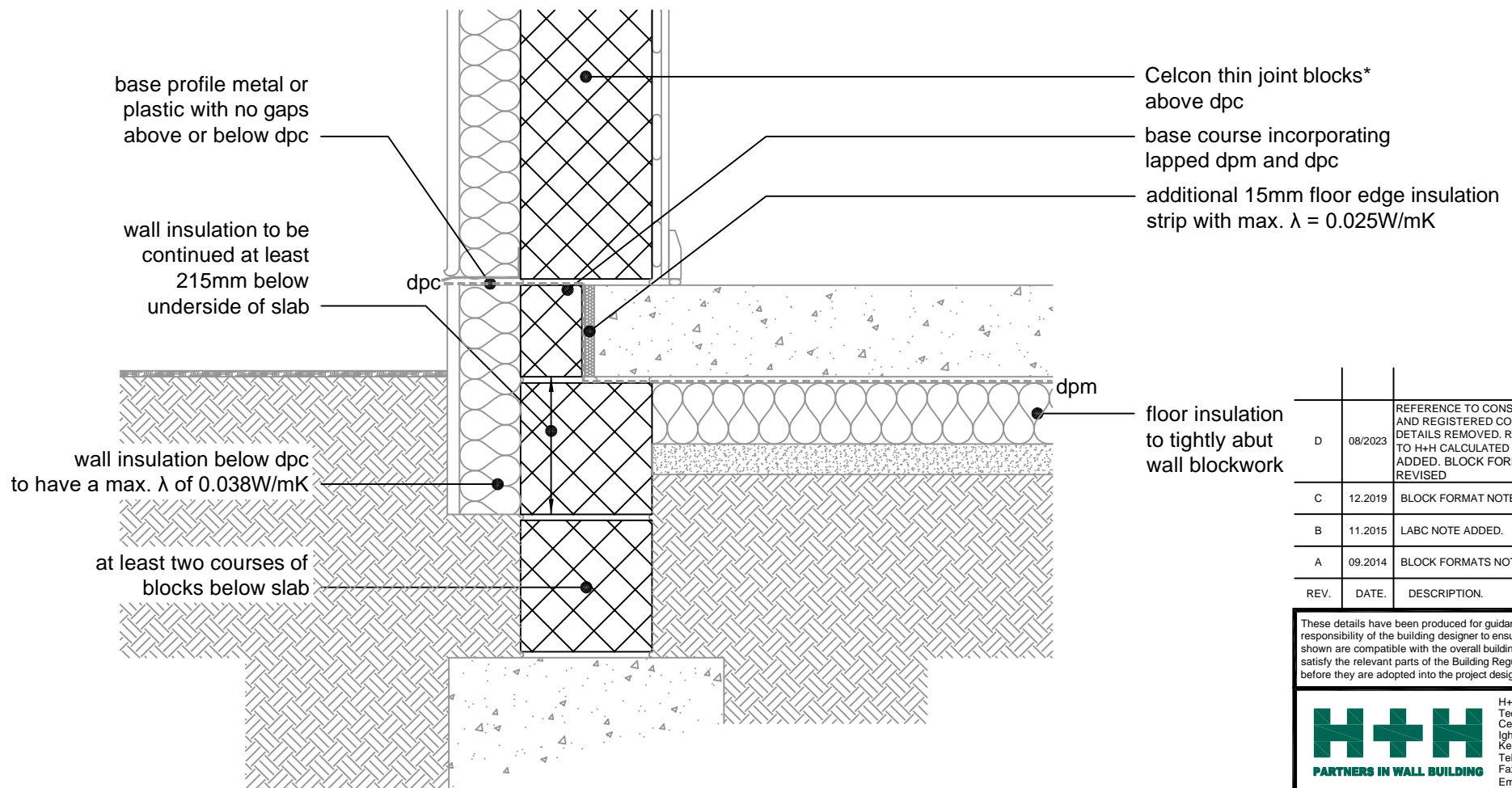
THIN JOINT

TITLE Solid External Masonry Wall,
 Externally Insulated - Suspended Beam
 And Block Floor, Insulation Above Slab

DWG No. HH-TJ-SW-01

DRAWN BY SJB CHECKED BY AHR

DATE Nov 2013 SCALE 1:100 @ A4 REV.NO. D



* Thin joint block formats are:
 Plus = 630mm x 215mm
 in 2mm Celfix mortar joints

This junction detail has been assessed by H+H UK Ltd. for thermal performance based on various Celcon blocks and insulation combinations. Applicable Ψ -values and minimum temperature factors compatible with the latest Building Regulations can be found in our 'H+H Calculated Ψ -values' document, available to download from our website www.hhcelcon.co.uk.

REV.	DATE	DESCRIPTION	BY.
D	08/2023	REFERENCE TO CONSTRUCTIVE AND REGISTERED CONSTRUCTION DETAILS REMOVED. REFERENCE TO H+H CALCULATED Ψ -VALUES ADDED. BLOCK FORMATS NOTE REVISED	SJB
C	12.2019	BLOCK FORMAT NOTES REVISED.	SJB
B	11.2015	LABC NOTE ADDED.	SJB
A	09.2014	BLOCK FORMATS NOTE REVISED	SJB

These details have been produced for guidance only. It is the responsibility of the building designer to ensure that the details shown are compatible with the overall building design and will satisfy the relevant parts of the Building Regulations applicable before they are adopted into the project design.


H+H UK Limited
 Technical Services Dept.
 Celcon House
 Ightham, Sevenoaks
 Kent, TN15 9HZ
 Tel +44 (0)1732 880580
 Fax +44 (0)1732 887013
 Email tsd@hhcelcon.co.uk

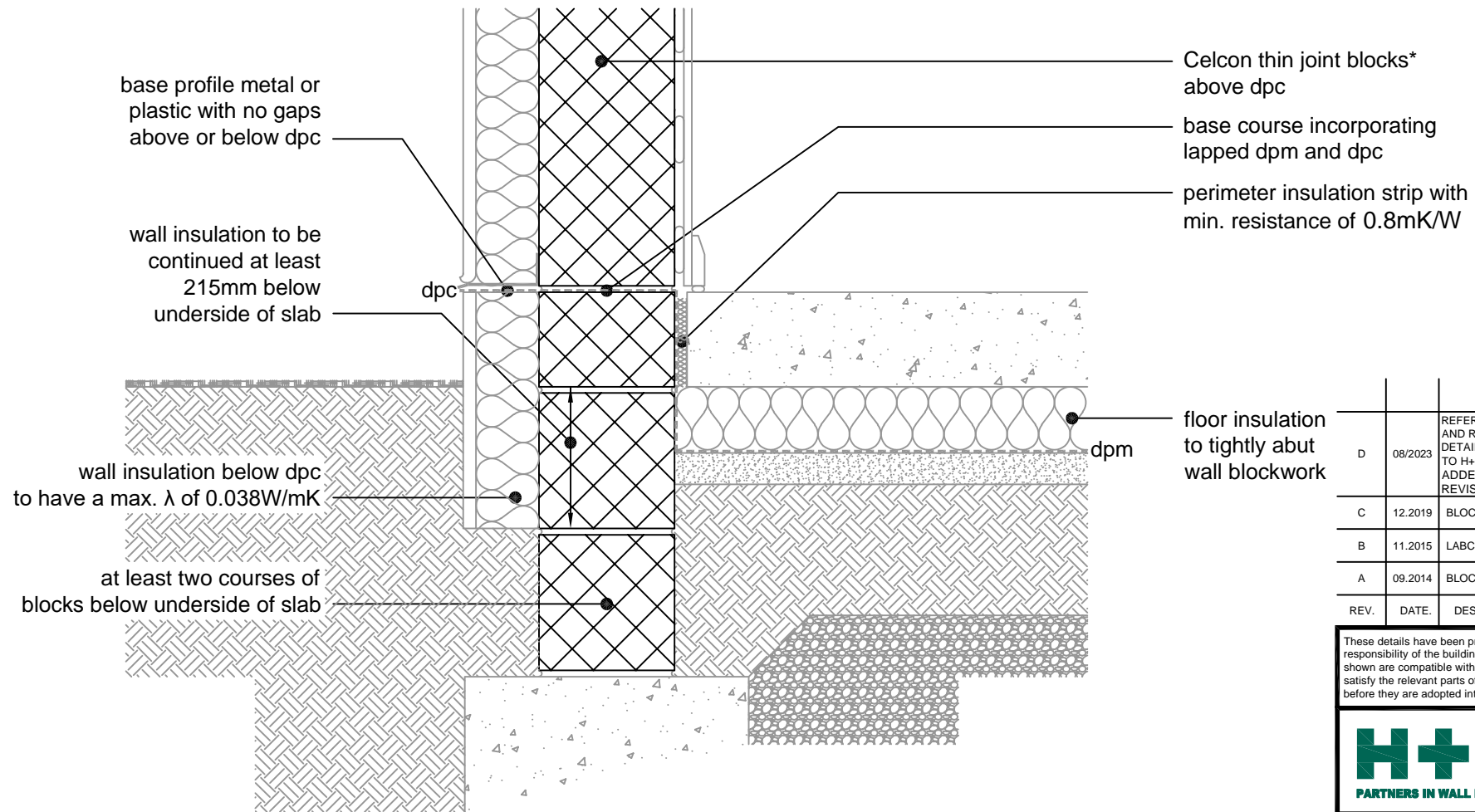
THIN JOINT

TITLE Solid External Masonry Wall,
 Externally Insulated - Suspended In-Situ
 Concrete Floor, Insulation Below Slab

DWG No. HH-TJ-SW-02

DRAWN BY SJB CHECKED BY AHR

DATE Nov 2013 SCALE 1:100 @ A4 REV.NO. D



base profile metal or plastic with no gaps above or below dpc

wall insulation to be continued at least 215mm below underside of slab

dpc

wall insulation below dpc to have a max. λ of 0.038W/mK

at least two courses of blocks below underside of slab

Celcon thin joint blocks* above dpc

base course incorporating lapped dpm and dpc

perimeter insulation strip with min. resistance of 0.8mK/W

dpm

floor insulation to tightly abut wall blockwork

* Thin joint block formats are:
 Plus = 630mm x 215mm
 in 2mm Celfix mortar joints

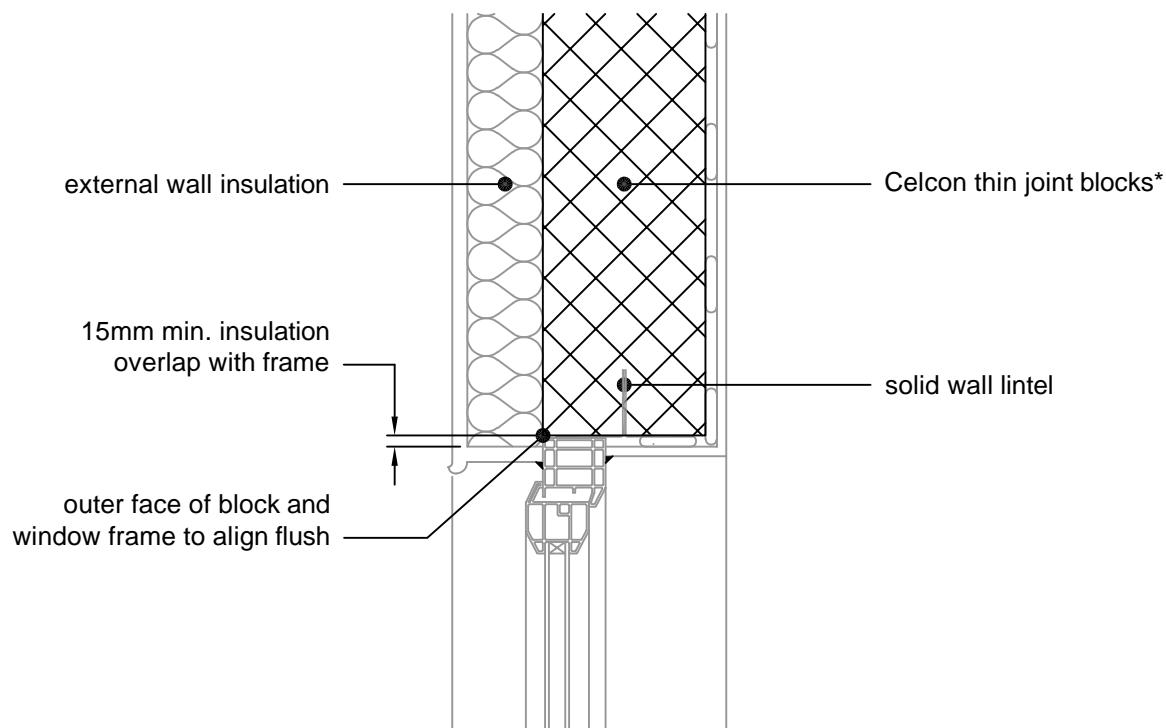
This junction detail has been assessed by H+H UK Ltd. for thermal performance based on various Celcon blocks and insulation combinations. Applicable Ψ -values and minimum temperature factors compatible with the latest Building Regulations can be found in our 'H+H Calculated Ψ -values' document, available to download from our website www.hhcelcon.co.uk.

REV.	DATE.	DESCRIPTION.	BY.
D	08/2023	REFERENCE TO CONSTRUCTIVE AND REGISTERED CONSTRUCTION DETAILS REMOVED. REFERENCE TO H+H CALCULATED Ψ -VALUES ADDED. BLOCK FORMATS NOTE REVISED	SJB
C	12.2019	BLOCK FORMAT NOTES REVISED.	SJB
B	11.2015	LABC NOTE ADDED.	SJB
A	09.2014	BLOCK FORMATS NOTE REVISED	SJB

These details have been produced for guidance only. It is the responsibility of the building designer to ensure that the details shown are compatible with the overall building design and will satisfy the relevant parts of the Building Regulations applicable before they are adopted into the project design.

H+H UK Limited
 Technical Services Dept.
 Celcon House
 Ightham, Sevenoaks
 Kent, TN15 9HZ
 Tel +44 (0)1732 880580
 Fax +44 (0)1732 887013
 Email tsd@hhcelcon.co.uk

THIN JOINT		
TITLE	Solid External Masonry Wall, Externally Insulated - Concrete Ground Bearing Floor, Insulation Below Slab	
DWG No.	HH-TJ-SW-03	
DRAWN BY	SJB	CHECKED BY AHR
DATE	Nov 2013	SCALE 1:100 @ A4
REV.No.	D	



* Thin joint block formats are:
 Plus = 630mm x 215mm
 in 2mm Celfix mortar joints

This junction detail has been assessed by H+H UK Ltd. for thermal performance based on various Celcon blocks and insulation combinations. Applicable Ψ -values and minimum temperature factors compatible with the latest Building Regulations can be found in our 'H+H Calculated Ψ -values' document, available to download from our website www.hhcelcon.co.uk.

REV.	DATE.	DESCRIPTION.	BY.
D	08/2023	REFERENCE TO CONSTRUCTIVE AND REGISTERED CONSTRUCTION DETAILS REMOVED. REFERENCE TO H+H CALCULATED Ψ -VALUES ADDED. BLOCK FORMATS NOTE REVISED	SJB
C	12.2019	BLOCK FORMAT NOTES REVISED.	SJB
B	11.2015	LABC NOTE ADDED.	SJB
A	09.2014	BLOCK FORMATS NOTE REVISED	SJB

These details have been produced for guidance only. It is the responsibility of the building designer to ensure that the details shown are compatible with the overall building design and will satisfy the relevant parts of the Building Regulations applicable before they are adopted into the project design.



H+H UK Limited
 Technical Services Dept.
 Celcon House
 Ightham, Sevenoaks
 Kent, TN15 9HZ
 Tel +44 (0)1732 880580
 Fax +44 (0)1732 887013
 Email tsd@hhcelcon.co.uk

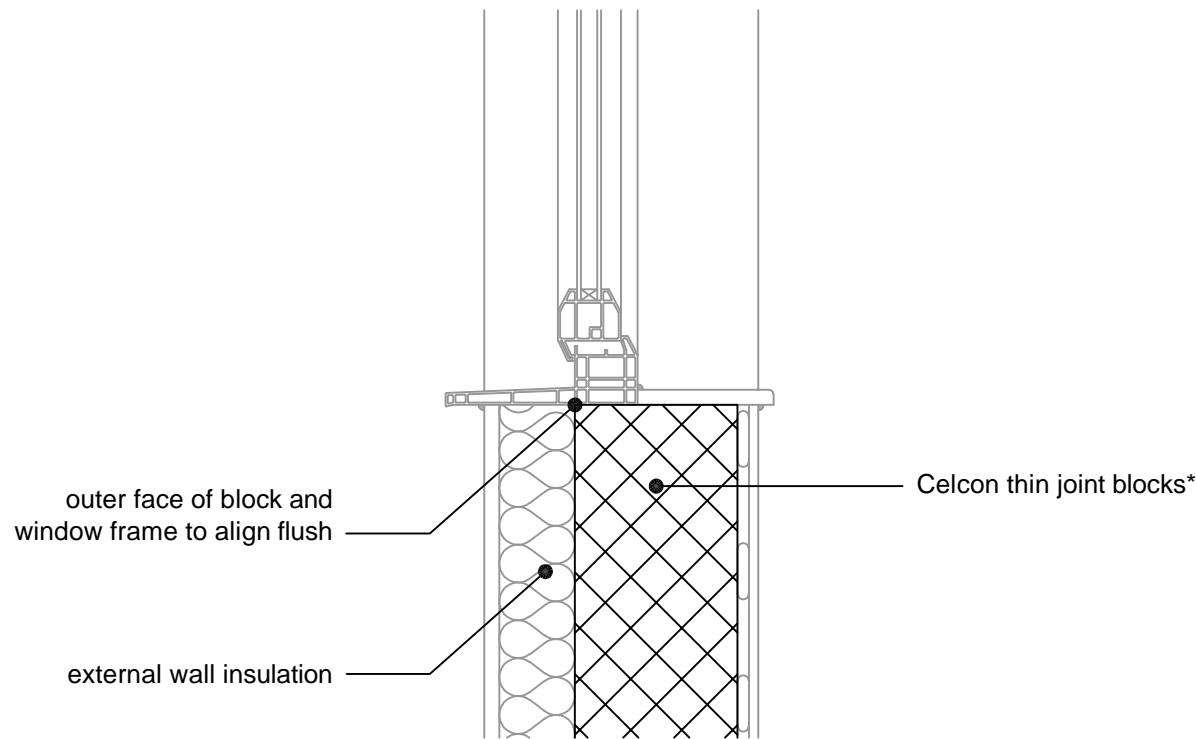
THIN JOINT

TITLE
 Solid External Masonry Wall,
 Externally Insulated - Solid Wall Lintel

DWG No. HH-TJ-SW-04

DRAWN BY SJB CHECKED BY AHR

DATE Nov 2013 SCALE 1:100 @ A4 REV.NO. D



* Thin joint block formats are:
 Plus = 630mm x 215mm
 in 2mm Celfix mortar joints

This junction detail has been assessed by H+H UK Ltd. for thermal performance based on various Celcon blocks and insulation combinations. Applicable Ψ -values and minimum temperature factors compatible with the latest Building Regulations can be found in our 'H+H Calculated Ψ -values' document, available to download from our website www.hhcelcon.co.uk.

REV.	DATE.	DESCRIPTION.	BY.
D	08/2023	REFERENCE TO CONSTRUCTIVE AND REGISTERED CONSTRUCTION DETAILS REMOVED. REFERENCE TO H+H CALCULATED Ψ -VALUES ADDED. BLOCK FORMATS NOTE REVISED	SJB
C	12.2019	BLOCK FORMAT NOTES REVISED.	SJB
B	11.2015	LABC NOTE ADDED.	SJB
A	09.2014	BLOCK FORMATS NOTE REVISED	SJB

These details have been produced for guidance only. It is the responsibility of the building designer to ensure that the details shown are compatible with the overall building design and will satisfy the relevant parts of the Building Regulations applicable before they are adopted into the project design.



H+H UK Limited
 Technical Services Dept.
 Celcon House
 Ightham, Sevenoaks
 Kent, TN15 9HZ
 Tel +44 (0)1732 880580
 Fax +44 (0)1732 887013
 Email tsd@hhcelcon.co.uk

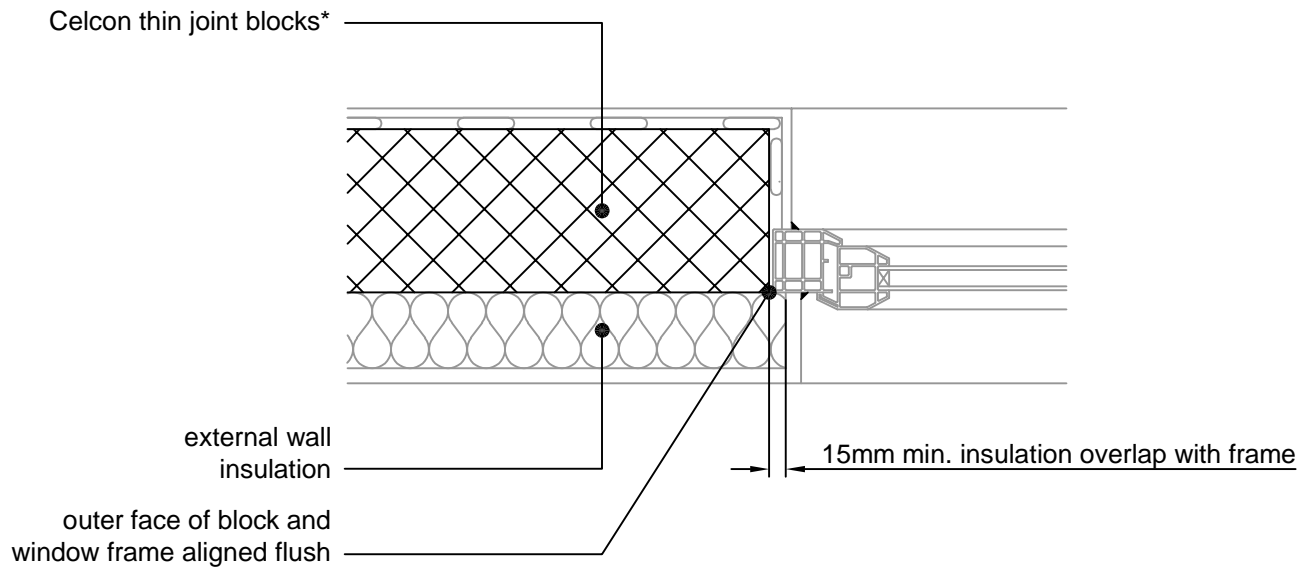
THIN JOINT

TITLE
 Solid External Masonry Wall,
 Externally Insulated - Sill

DWG No. HH-TJ-SW-05

DRAWN BY SJB CHECKED BY AHR

DATE Nov 2013 SCALE 1:100 @ A4 REV.NO. D



* Thin joint block formats are:
 Plus = 630mm x 215mm
 in 2mm Celfix mortar joints

This junction detail has been assessed by H+H UK Ltd. for thermal performance based on various Celcon blocks and insulation combinations. Applicable Ψ -values and minimum temperature factors compatible with the latest Building Regulations can be found in our 'H+H Calculated Ψ -values' document, available to download from our website www.hhcelcon.co.uk.

REV.	DATE.	DESCRIPTION.	BY.
D	08/2023	REFERENCE TO CONSTRUCTIVE AND REGISTERED CONSTRUCTION DETAILS REMOVED. REFERENCE TO H+H CALCULATED Ψ -VALUES ADDED. BLOCK FORMATS NOTE REVISED	SJB
C	12.2019	BLOCK FORMAT NOTES REVISED.	SJB
B	11.2015	LABC NOTE ADDED.	SJB
A	09.2014	BLOCK FORMATS NOTE REVISED	SJB

These details have been produced for guidance only. It is the responsibility of the building designer to ensure that the details shown are compatible with the overall building design and will satisfy the relevant parts of the Building Regulations applicable before they are adopted into the project design.



H+H UK Limited
 Technical Services Dept.
 Celcon House
 Ightham, Sevenoaks
 Kent, TN15 9HZ
 Tel +44 (0)1732 880580
 Fax +44 (0)1732 887013
 Email tsd@hhcelcon.co.uk

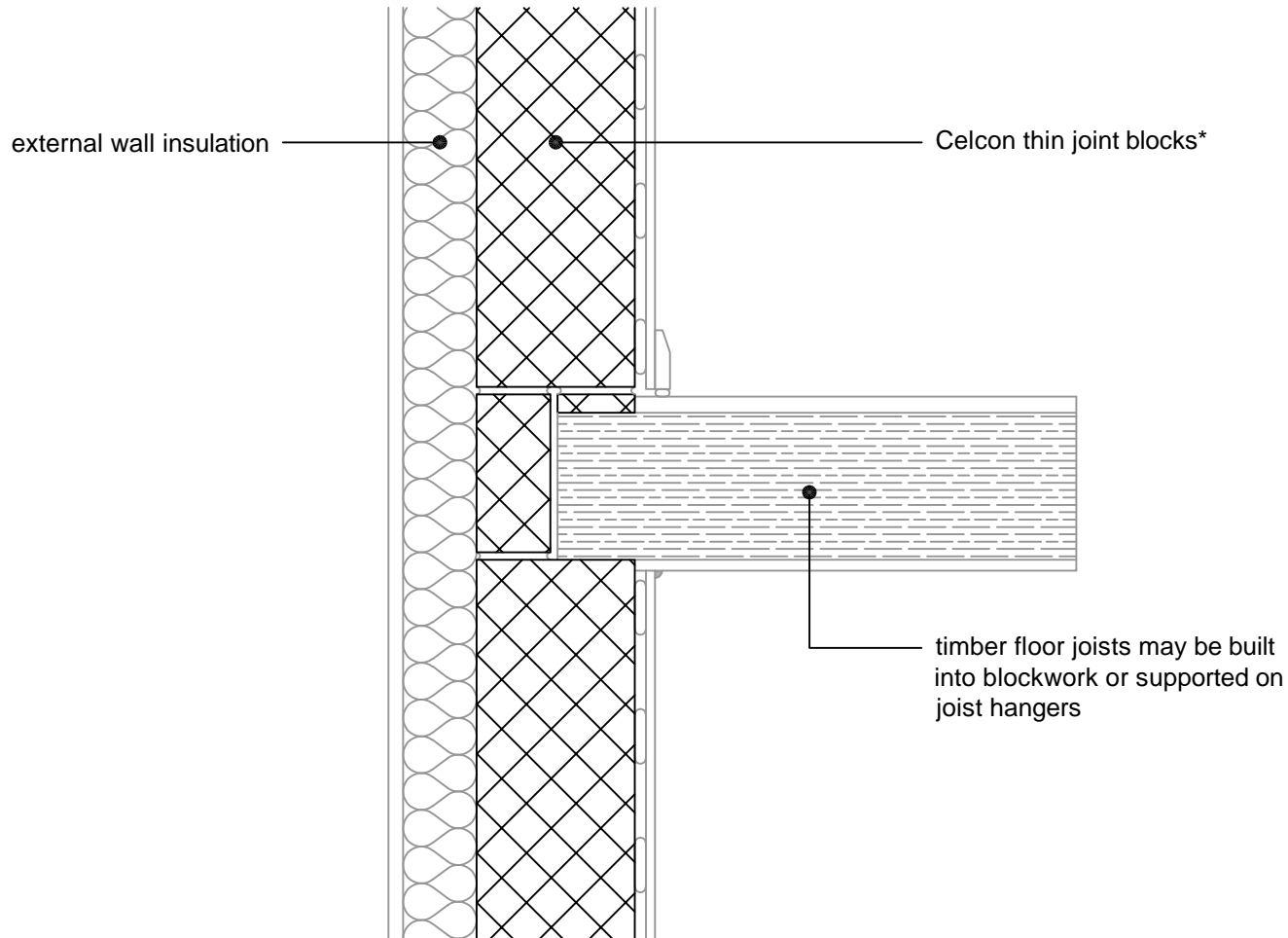
THIN JOINT

TITLE
 Solid External Masonry Wall,
 Externally Insulated - Jamb

DWG No. HH-TJ-SW-06

DRAWN BY SJB CHECKED BY AHR

DATE Nov 2013 SCALE 1:100 @ A4 REV. NO. D



* Thin joint block formats are:
 Plus = 630mm x 215mm
 in 2mm Celfix mortar joints

This junction detail has been assessed by H+H UK Ltd. for thermal performance based on various Celcon blocks and insulation combinations. Applicable Ψ -values and minimum temperature factors compatible with the latest Building Regulations can be found in our 'H+H Calculated Ψ -values' document, available to download from our website www.hhcelcon.co.uk.

REV.	DATE.	DESCRIPTION.	BY.
D	08/2023	REFERENCE TO CONSTRUCTIVE AND REGISTERED CONSTRUCTION DETAILS REMOVED. REFERENCE TO H+H CALCULATED Ψ -VALUES ADDED. BLOCK FORMATS NOTE REVISED	SJB
C	12.2019	BLOCK FORMAT NOTES REVISED.	SJB
B	11.2015	LABC NOTE ADDED.	SJB
A	09.2014	BLOCK FORMATS NOTE REVISED	SJB

These details have been produced for guidance only. It is the responsibility of the building designer to ensure that the details shown are compatible with the overall building design and will satisfy the relevant parts of the Building Regulations applicable before they are adopted into the project design.



H+H UK Limited
 Technical Services Dept.
 Celcon House
 Ightham, Sevenoaks
 Kent, TN15 9HZ.
 Tel +44 (0)1732 880580
 Fax +44 (0)1732 887013
 Email tsd@hhcelcon.co.uk

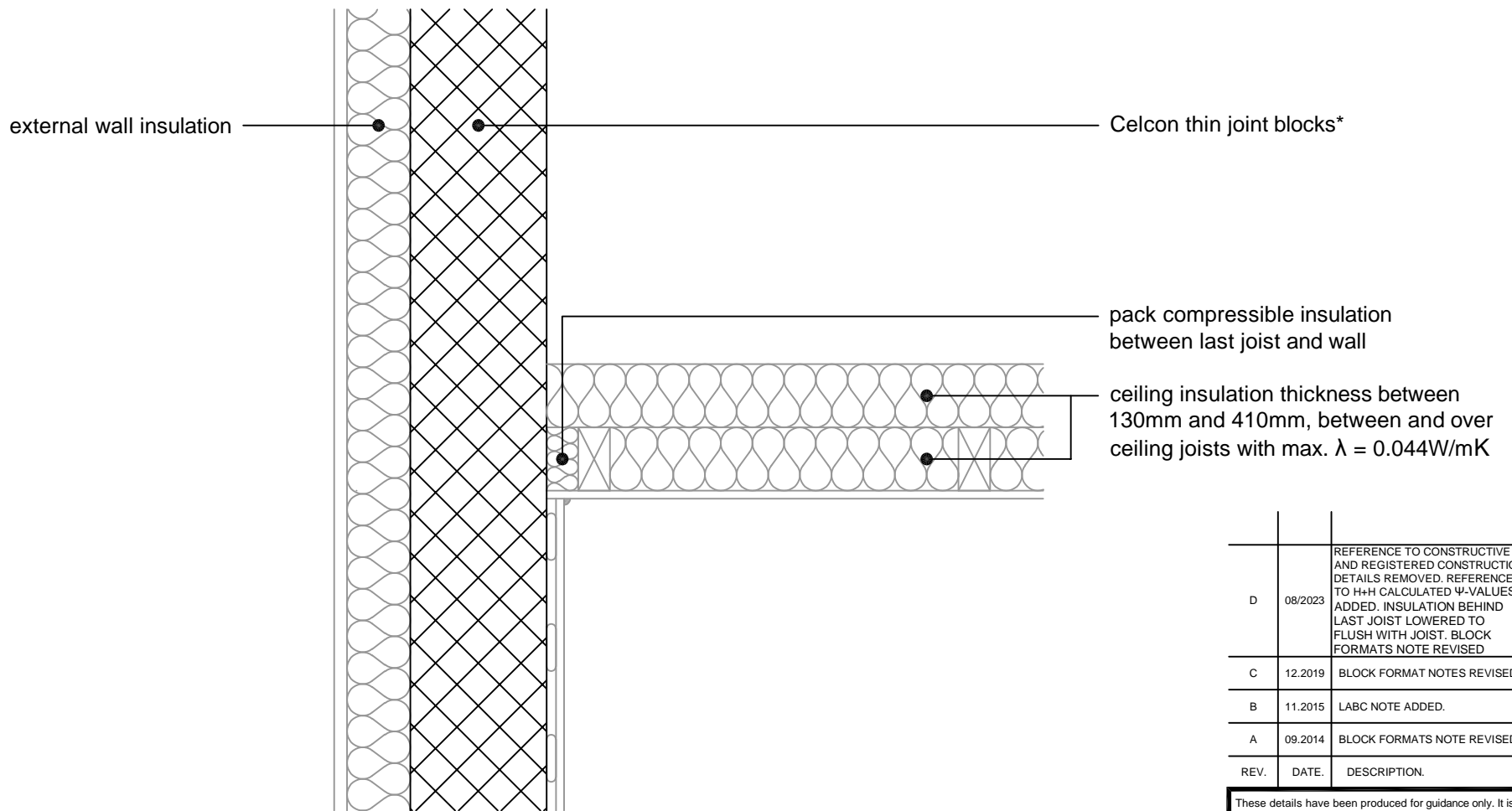
THIN JOINT

TITLE Solid External Masonry Wall,
 Externally Insulated - Intermediate Timber
 Floor Within A Dwelling

DWG No. **HH-TJ-SW-07**

DRAWN BY **SJB** CHECKED BY **AHR**

DATE **Nov 2013** SCALE **1:100 @ A4** REV.NO. **D**



* Thin joint block formats are:
 Plus = 630mm x 215mm
 in 2mm Celfix mortar joints

This junction detail has been assessed by H+H UK Ltd. for thermal performance based on various Celcon blocks and insulation combinations. Applicable Ψ -values and minimum temperature factors compatible with the latest Building Regulations can be found in our 'H+H Calculated Ψ -values' document, available to download from our website www.hhcelcon.co.uk.

REV.	DATE.	DESCRIPTION.	BY.
D	08/2023	REFERENCE TO CONSTRUCTIVE AND REGISTERED CONSTRUCTION DETAILS REMOVED. REFERENCE TO H+H CALCULATED Ψ -VALUES ADDED. INSULATION BEHIND LAST JOIST LOWERED TO FLUSH WITH JOIST. BLOCK FORMATS NOTE REVISED	SJB
C	12.2019	BLOCK FORMAT NOTES REVISED.	SJB
B	11.2015	LABC NOTE ADDED.	SJB
A	09.2014	BLOCK FORMATS NOTE REVISED	SJB

These details have been produced for guidance only. It is the responsibility of the building designer to ensure that the details shown are compatible with the overall building design and will satisfy the relevant parts of the Building Regulations applicable before they are adopted into the project design.

H+H
 PARTNERS IN WALL BUILDING

H+H UK Limited
 Technical Services Dept.
 Celcon House
 Ightham, Sevenoaks
 Kent, TN15 9HZ
 Tel +44 (0)1732 880580
 Fax +44 (0)1732 887013
 Email tsd@hhcelcon.co.uk

THIN JOINT

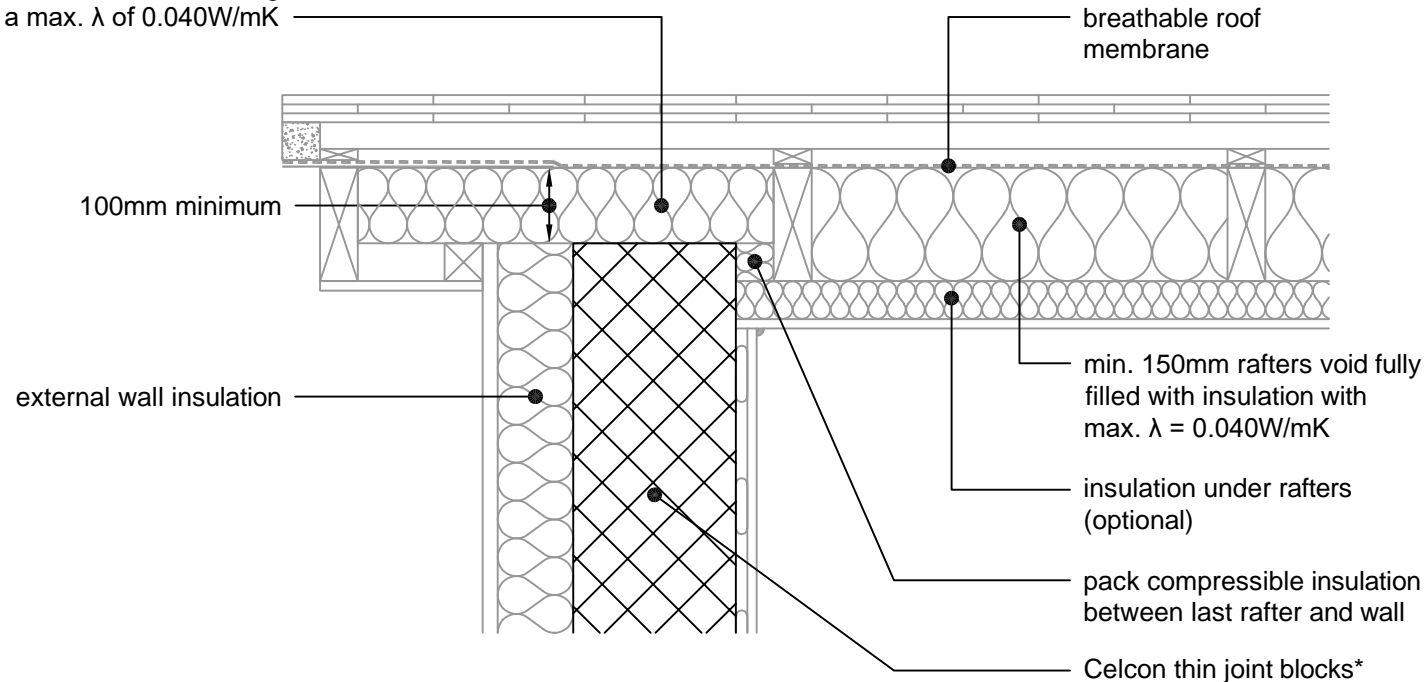
TITLE Solid External Masonry Wall,
 Externally Insulated - Pitched Roof, Gable,
 Insulation At Ceiling Level, Ventilated Loft

DWG No. HH-TJ-SW-09

DRAWN BY SJB CHECKED BY AHR

DATE Nov 2013 SCALE 1:100 @ A4 REV.NO. D

fill this void with insulation having
a max. λ of 0.040W/mK



* Thin joint block formats are:
Plus = 630mm x 215mm
in 2mm Celfix mortar joints

This junction detail has been assessed by H+H UK Ltd. for thermal performance based on various Celcon blocks and insulation combinations. Applicable Ψ -values and minimum temperature factors compatible with the latest Building Regulations can be found in our 'H+H Calculated Ψ -values' document, available to download from our website www.hhcelcon.co.uk.

REV.	DATE.	DESCRIPTION.	BY.
D	08/2023	REFERENCE TO CONSTRUCTIVE AND REGISTERED CONSTRUCTION DETAILS REMOVED. REFERENCE TO H+H CALCULATED Ψ -VALUES ADDED. BLOCK FORMATS NOTE REVISED	SJB
C	12.2019	BLOCK FORMAT NOTES REVISED.	SJB
B	11.2015	LABC NOTE ADDED.	SJB
A	09.2014	BLOCK FORMATS NOTE REVISED	SJB

These details have been produced for guidance only. It is the responsibility of the building designer to ensure that the details shown are compatible with the overall building design and will satisfy the relevant parts of the Building Regulations applicable before they are adopted into the project design.



H+H UK Limited
Technical Services Dept.
Celcon House
Ightham, Sevenoaks
Kent, TN15 9HZ
Tel +44 (0)1732 880580
Fax +44 (0)1732 887013
Email tsd@hhcelcon.co.uk

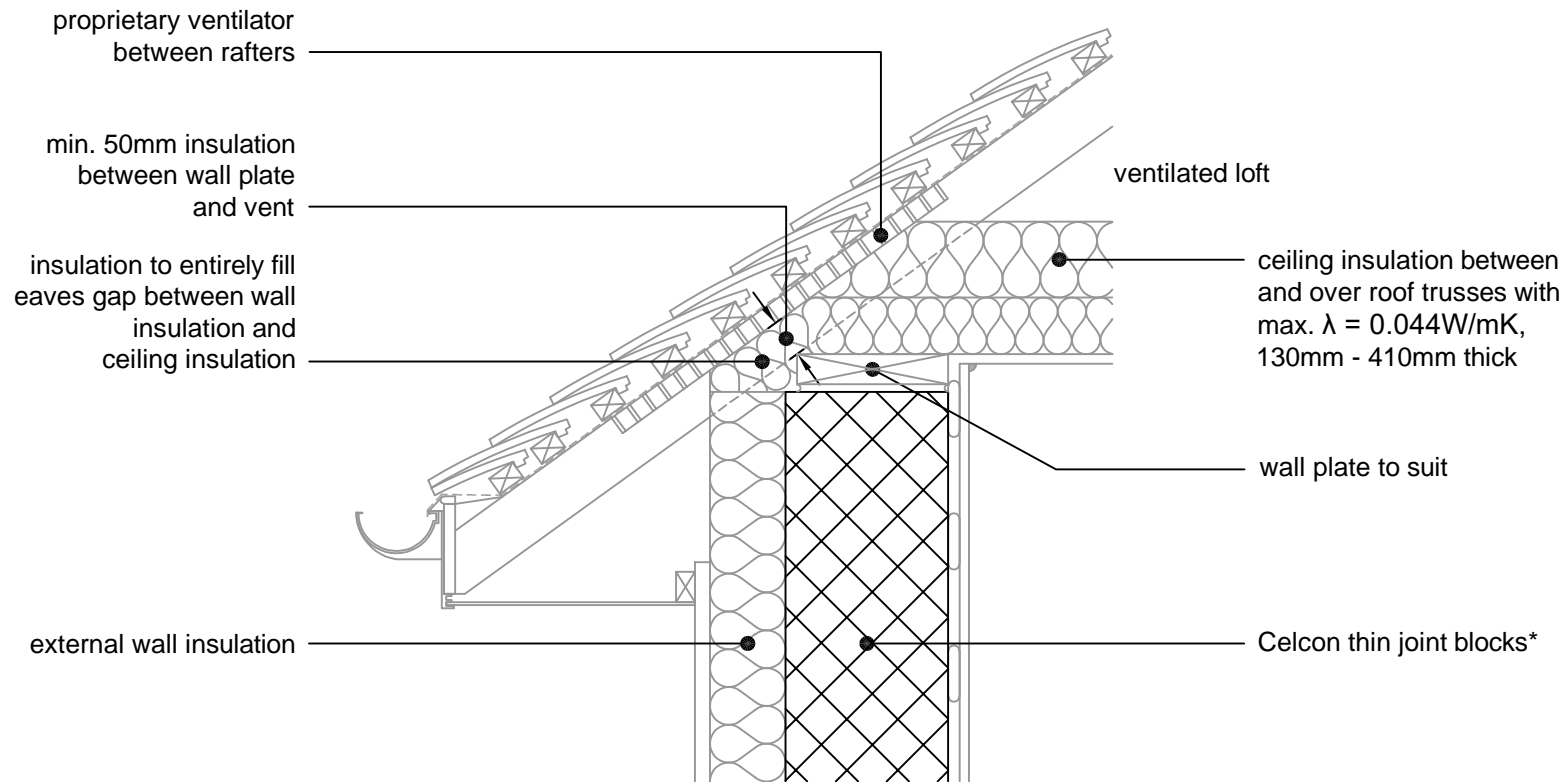
THIN JOINT

TITLE
Solid External Masonry Wall,
Externally Insulated - Pitched Roof, Gable, Insulation
At Rafter Level, Unventilated Rafter Void

DWG No. **HH-TJ-SW-10**

DRAWN BY **SJB** CHECKED BY **AHR**

DATE **Nov 2013** SCALE **1:100 @ A4** REV.NO. **D**



* Thin joint block formats are:
 Plus = 630mm x 215mm
 in 2mm Celfix mortar joints

This junction detail has been assessed by H+H UK Ltd. for thermal performance based on various Celcon blocks and insulation combinations. Applicable Ψ -values and minimum temperature factors compatible with the latest Building Regulations can be found in our 'H+H Calculated Ψ -values' document, available to download from our website www.hhcelcon.co.uk.

REV.	DATE	DESCRIPTION	BY.
D	08/2023	REFERENCE TO CONSTRUCTIVE AND REGISTERED CONSTRUCTION DETAILS REMOVED. REFERENCE TO H+H CALCULATED Ψ -VALUES ADDED. BLOCK FORMATS NOTE REVISED	SJB
C	12.2019	BLOCK FORMAT NOTES REVISED.	SJB
B	11.2015	LABC NOTE ADDED.	SJB
A	09.2014	BLOCK FORMATS NOTE REVISED	SJB

These details have been produced for guidance only. It is the responsibility of the building designer to ensure that the details shown are compatible with the overall building design and will satisfy the relevant parts of the Building Regulations applicable before they are adopted into the project design.



H+H UK Limited
 Technical Services Dept.
 Celcon House
 Ightham, Sevenoaks
 Kent, TN15 9HZ
 Tel +44 (0)1732 880580
 Fax +44 (0)1732 887013
 Email tsd@hhcelcon.co.uk

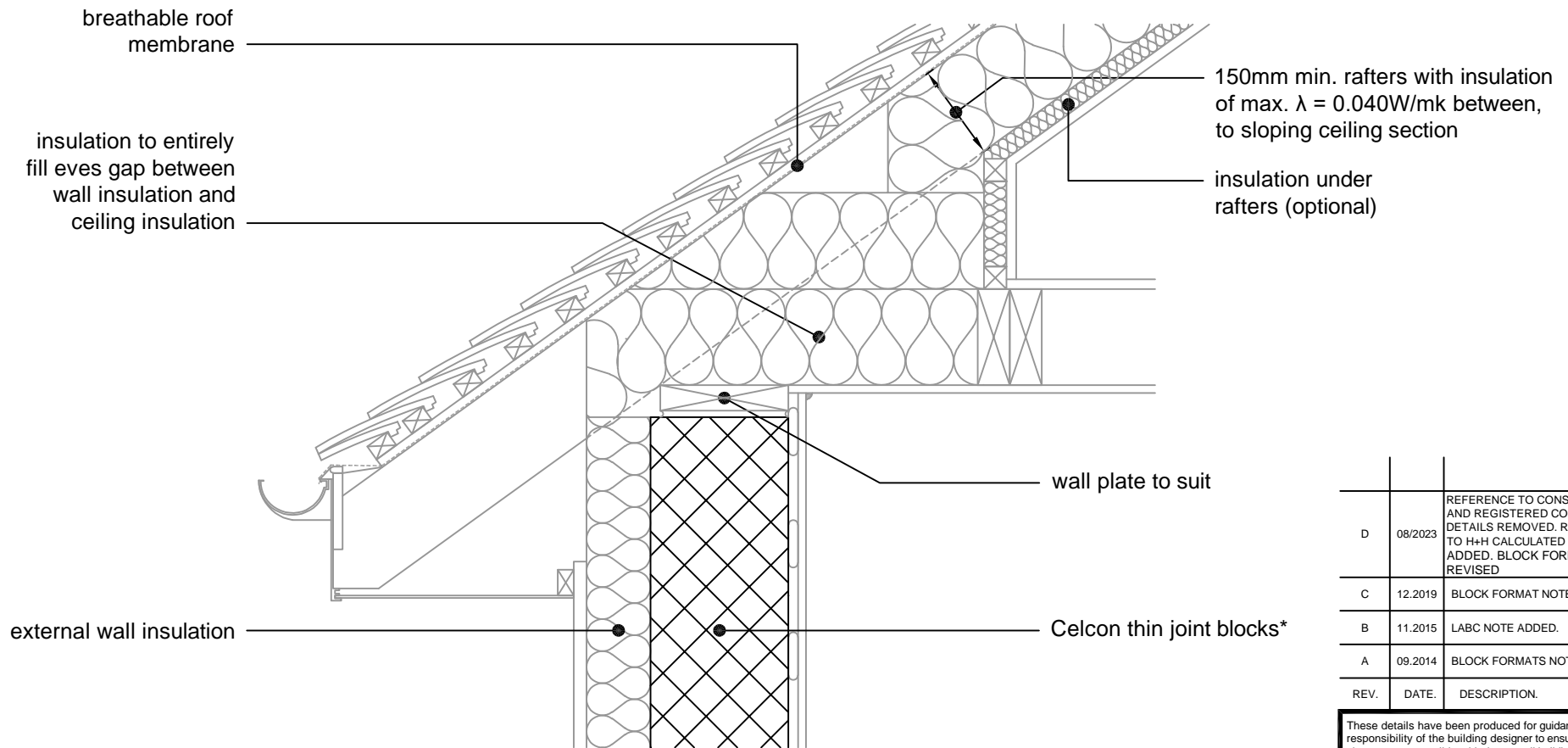
THIN JOINT

TITLE
 Solid External Masonry Wall,
 Externally Insulated - Pitched Roof, Eaves,
 Insulation At Ceiling Level, Ventilated Loft

DWG No. **HH-TJ-SW-11**

DRAWN BY **SJB** CHECKED BY **AHR**

DATE **Nov 2013** SCALE **1:100 @ A4** REV.NO. **D**



* Thin joint block formats are:
 Plus = 630mm x 215mm
 in 2mm Celfix mortar joints

This junction detail has been assessed by H+H UK Ltd. for thermal performance based on various Celcon blocks and insulation combinations. Applicable Ψ -values and minimum temperature factors compatible with the latest Building Regulations can be found in our 'H+H Calculated Ψ -values' document, available to download from our website www.hhcelcon.co.uk.

REV.	DATE	DESCRIPTION	BY.
D	08/2023	REFERENCE TO CONSTRUCTIVE AND REGISTERED CONSTRUCTION DETAILS REMOVED. REFERENCE TO H+H CALCULATED Ψ -VALUES ADDED. BLOCK FORMATS NOTE REVISED	SJB
C	12.2019	BLOCK FORMAT NOTES REVISED.	SJB
B	11.2015	LABC NOTE ADDED.	SJB
A	09.2014	BLOCK FORMATS NOTE REVISED	SJB

These details have been produced for guidance only. It is the responsibility of the building designer to ensure that the details shown are compatible with the overall building design and will satisfy the relevant parts of the Building Regulations applicable before they are adopted into the project design.



H+H UK Limited
 Technical Services Dept.
 Celcon House
 Ightham, Sevenoaks
 Kent, TN15 9HZ
 Tel +44 (0)1732 880580
 Fax +44 (0)1732 887013
 Email tsd@hhcelcon.co.uk

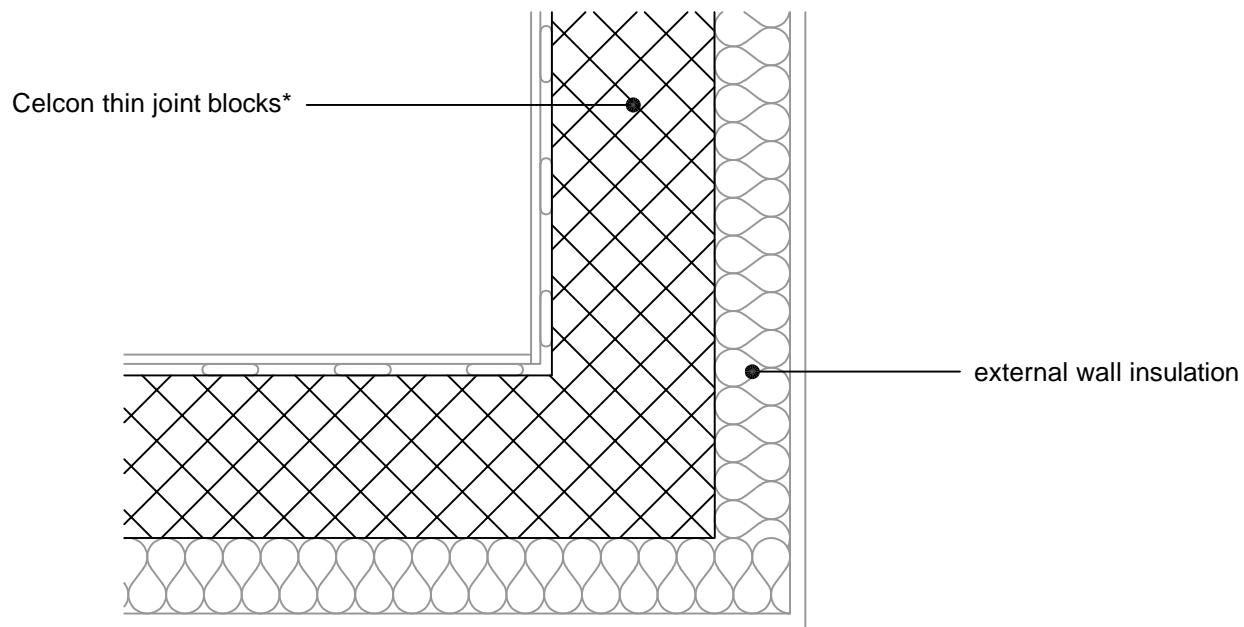
THIN JOINT

TITLE
 Solid External Masonry Wall,
 Externally Insulated - Pitched Roof, Eaves, Insulation
 At Rafter Level, Unventilated Rafter Void

DWG No. **HH-TJ-SW-12**

DRAWN BY **SJB** CHECKED BY **AHR**

DATE **Nov 2013** SCALE **1:100 @ A4** REV.NO. **D**



* Thin joint block formats are:
 Plus = 630mm x 215mm
 in 2mm Celfix mortar joints

This junction detail has been assessed by H+H UK Ltd. for thermal performance based on various Celcon blocks and insulation combinations. Applicable Ψ -values and minimum temperature factors compatible with the latest Building Regulations can be found in our 'H+H Calculated Ψ -values' document, available to download from our website www.hhcelcon.co.uk.

REV.	DATE.	DESCRIPTION.	BY.
D	08/2023	REFERENCE TO CONSTRUCTIVE AND REGISTERED CONSTRUCTION DETAILS REMOVED. REFERENCE TO H+H CALCULATED Ψ -VALUES ADDED. BLOCK FORMATS NOTE REVISED	SJB
C	12.2019	BLOCK FORMAT NOTES REVISED.	SJB
B	11.2015	LABC NOTE ADDED.	SJB
A	09.2014	BLOCK FORMATS NOTE REVISED	SJB

These details have been produced for guidance only. It is the responsibility of the building designer to ensure that the details shown are compatible with the overall building design and will satisfy the relevant parts of the Building Regulations applicable before they are adopted into the project design.



H+H UK Limited
 Technical Services Dept.
 Celcon House
 Ightham, Sevenoaks
 Kent, TN15 9HZ
 Tel +44 (0)1732 880580
 Fax +44 (0)1732 887013
 Email tsd@hhcelcon.co.uk

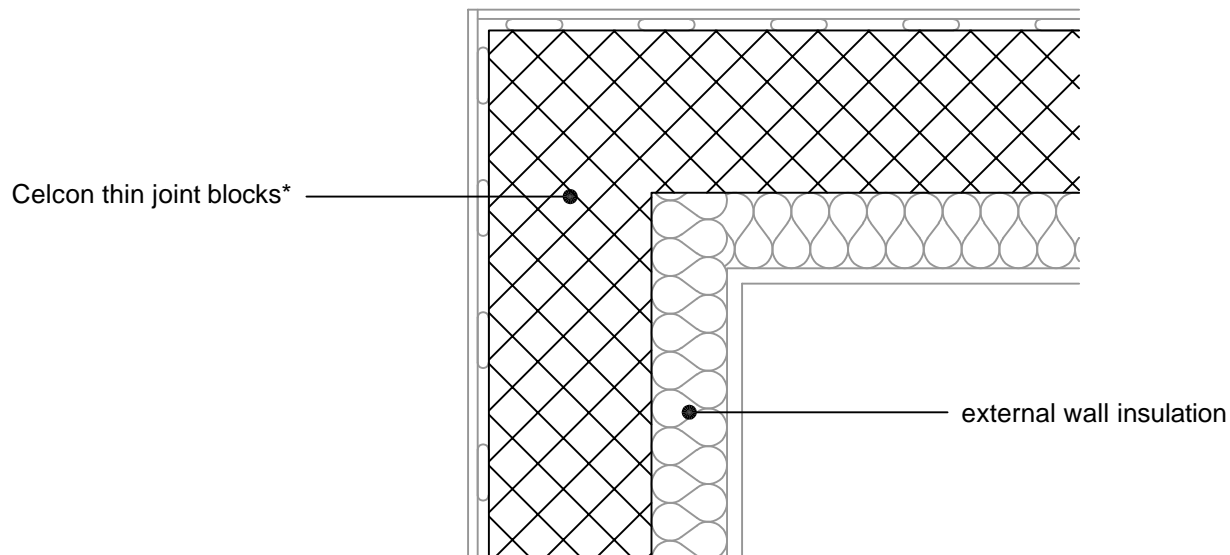
THIN JOINT

TITLE
 Solid External Masonry Wall,
 Externally Insulated - Normal Corner

DWG No. HH-TJ-SW-13

DRAWN BY SJB CHECKED BY AHR

DATE Nov 2013 SCALE 1:100 @ A4 REV.NO. D



* Thin joint block formats are:
 Plus = 630mm x 215mm
 in 2mm Celfix mortar joints

This junction detail has been assessed by H+H UK Ltd. for thermal performance based on various Celcon blocks and insulation combinations. Applicable Ψ -values and minimum temperature factors compatible with the latest Building Regulations can be found in our 'H+H Calculated Ψ -values' document, available to download from our website www.hhcelcon.co.uk.

REV.	DATE.	DESCRIPTION.	BY.
D	08/2023	REFERENCE TO CONSTRUCTIVE AND REGISTERED CONSTRUCTION DETAILS REMOVED. REFERENCE TO H+H CALCULATED Ψ -VALUES ADDED. BLOCK FORMATS NOTE REVISED	SJB
C	12.2019	BLOCK FORMAT NOTES REVISED.	SJB
B	11.2015	LABC NOTE ADDED.	SJB
A	09.2014	BLOCK FORMATS NOTE REVISED	SJB

These details have been produced for guidance only. It is the responsibility of the building designer to ensure that the details shown are compatible with the overall building design and will satisfy the relevant parts of the Building Regulations applicable before they are adopted into the project design.



H+H UK Limited
 Technical Services Dept.
 Celcon House
 Ightham, Sevenoaks
 Kent, TN15 9HZ
 Tel +44 (0)1732 880580
 Fax +44 (0)1732 887013
 Email tsd@hhcelcon.co.uk

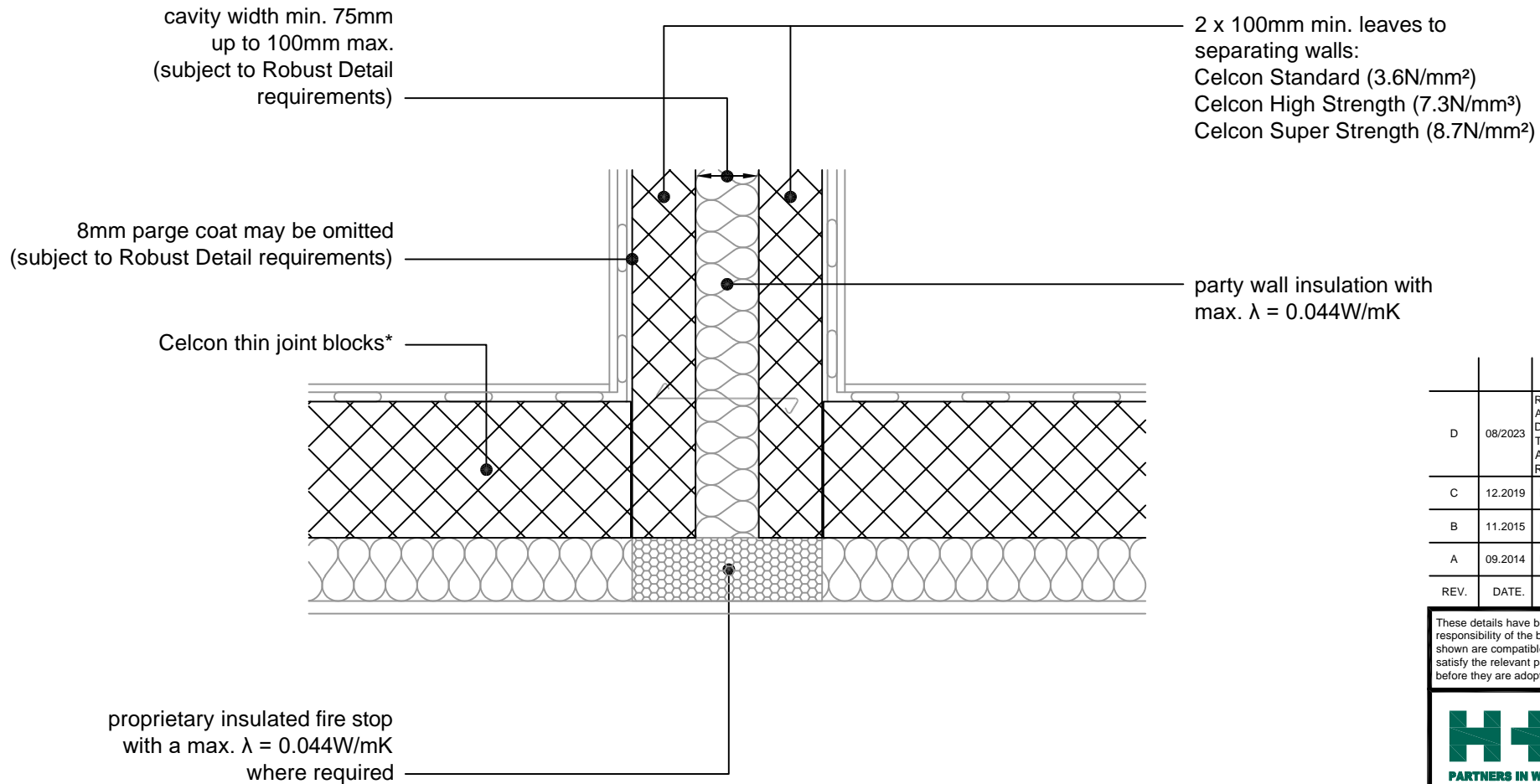
THIN JOINT

TITLE
 Solid External Masonry Wall,
 Externally Insulated - Inverted Corner

DWG No. HH-TJ-SW-14

DRAWN BY SJB CHECKED BY AHR

DATE Nov 2013 SCALE 1:100 @ A4 REV.NO. D



* Thin joint block formats are:
 Plus = 630mm x 215mm
 in 2mm Celfix mortar joints

This junction detail has been assessed by H+H UK Ltd. for thermal performance based on various Celcon blocks and insulation combinations. Applicable Ψ -values and minimum temperature factors compatible with the latest Building Regulations can be found in our 'H+H Calculated Ψ -values' document, available to download from our website www.hhcelcon.co.uk.

REV.	DATE.	DESCRIPTION.	BY.
D	08/2023	REFERENCE TO CONSTRUCTIVE AND REGISTERED CONSTRUCTION DETAILS REMOVED. REFERENCE TO H+H CALCULATED Ψ -VALUES ADDED. BLOCK FORMATS NOTE REVISED	SJB
C	12.2019	BLOCK FORMAT NOTES REVISED.	SJB
B	11.2015	LABC NOTE ADDED.	SJB
A	09.2014	BLOCK FORMATS NOTE REVISED	SJB

These details have been produced for guidance only. It is the responsibility of the building designer to ensure that the details shown are compatible with the overall building design and will satisfy the relevant parts of the Building Regulations applicable before they are adopted into the project design.



H+H UK Limited
 Technical Services Dept.
 Celcon House
 Ightham, Sevenoaks
 Kent, TN15 9HZ
 Tel +44 (0)1732 880580
 Fax +44 (0)1732 887013
 Email tsd@hhcelcon.co.uk

THIN JOINT

TITLE Solid External Masonry Wall,
 Externally Insulated - Party Wall Between
 Dwellings

DWG No. HH-TJ-SW-15

DRAWN BY SJB CHECKED BY AHR

DATE Nov 2013 SCALE 1:100 @ A4 REV.NO. D